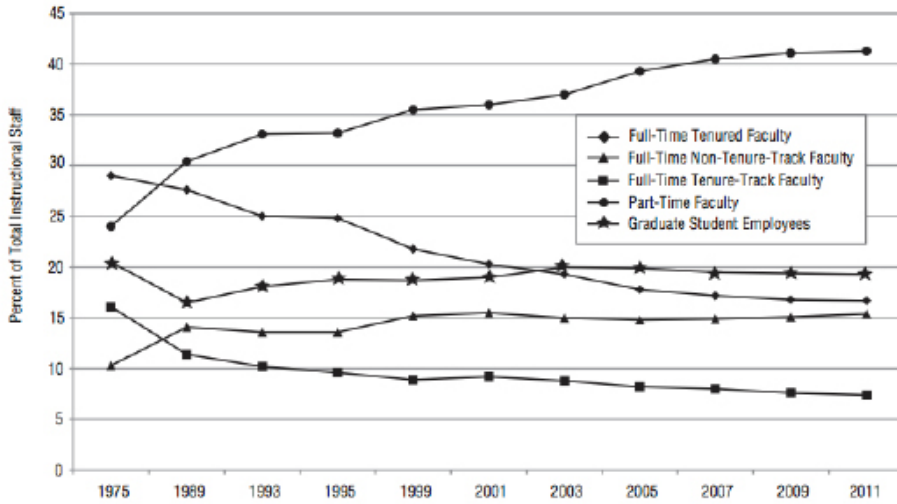


Evolution of job status in the United States



Notes: Figures for 2011 are estimated. Figures from 2005 have been corrected from those published in 2012. Figures are for degree-granting institutions only, but the precise category of institutions included has changed over time. Graduate student employee figure for 1975 is from 1976. Percentages may not add to 100 due to rounding.

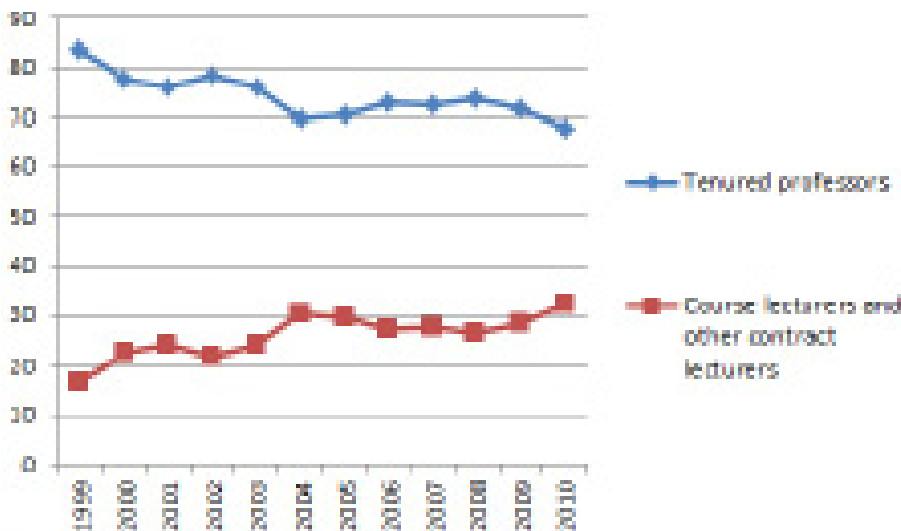
Source: US Department of Education, IPEDS Fall Staff Survey



"The role of tenure in American higher education has been reduced dramatically in recent decades. In 1975, 57% of all faculty (excluding graduate students) were in the tenure system; by 2009 that figure had been cut almost in half to 30%. Some observers predict that the share of tenured/tenure track faculty will bottom out at between 15-20%, with tenure being largely limited to the flagship public and private research universities and the wealthiest of the liberal arts colleges."

Source: *Are tenure track professors better teachers?* de David N. Figlio Morton O. Schapiro Kevin B. Soter, *National bureau of economic research*, 2013

Evolution of job status in Canada



Source: Canadian Association of University Teachers (CAUT).

